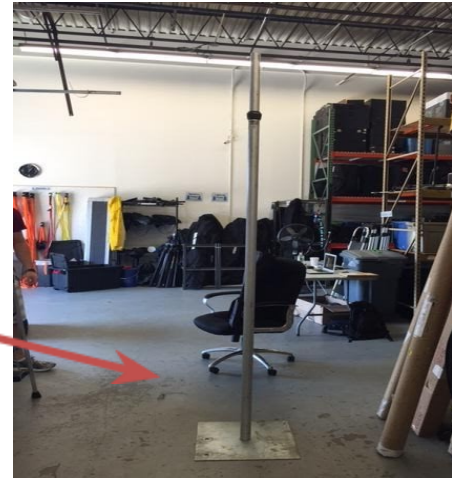


Hoop Tower Setup

1. Set up pipe and drape base with pin

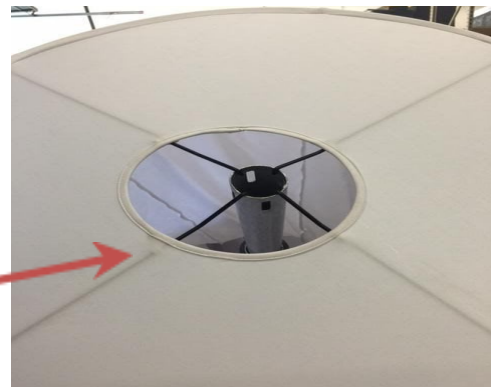


2. Put pipe and drape pole onto pin



3. Take hoop tower out of bag, make sure your hands are either clean or you are using the provided gloves

4. Place the pipe and drape pole through the hoop tower



5. Clip on all four black hooks to the top of the pipe and drape pole

6. Raise the pipe and drape pole up until the bottom of the hoop tower is about 1 inch off of the ground to give the idea of the floating look.

